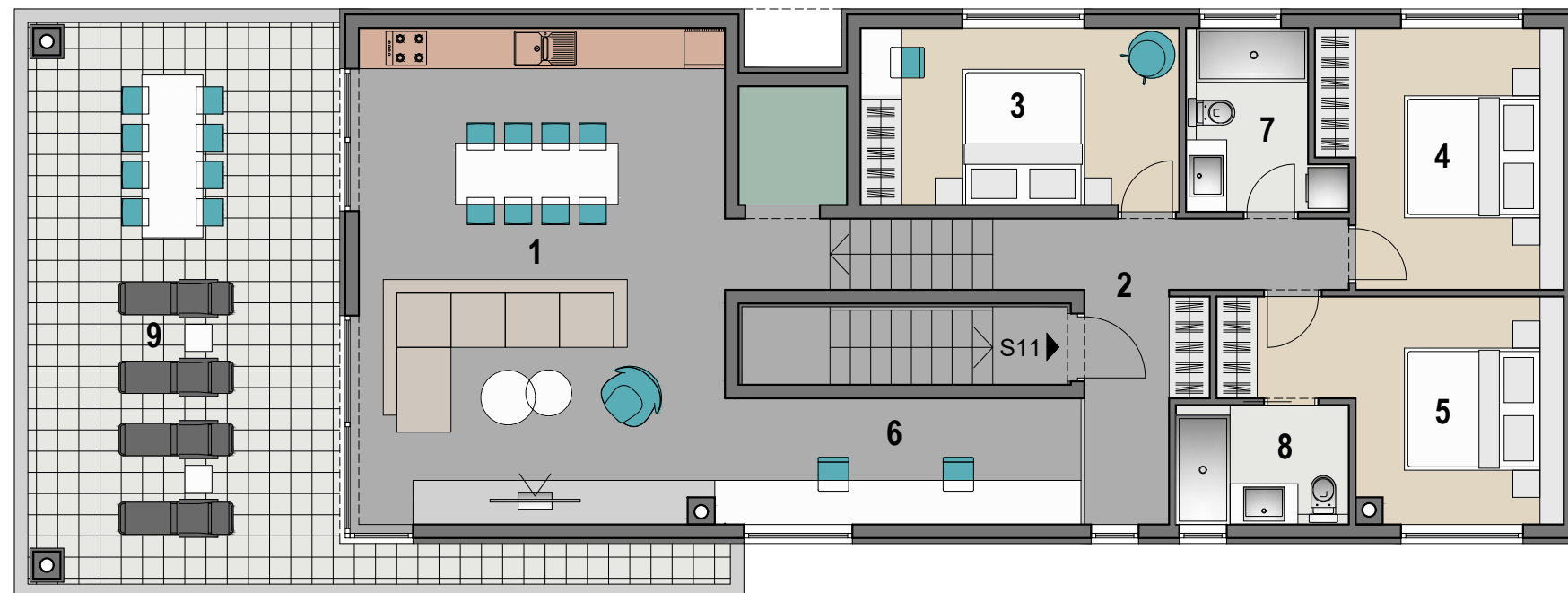


VIŠESTAMBENA ZGRADA U MANDRAMA, STAN S11



POTKROVLJE M 1:100

STAN S11		
1	DNEVNI BORAVAK I KUHINJA	39.40 m2
2	HODNIK	14.90 m2
3	SOBA 1	12.40 m2
4	SOBA 2	13.00 m2
5	SOBA 3	13.20 m2
6	RADNA SOBA	9.80 m2
7	KUPAONICA 1	5.00 m2
8	KUPAONICA 2	4.40 m2
9	NENATKRIVENA TERASA	41.00 m2
		153.10 m2