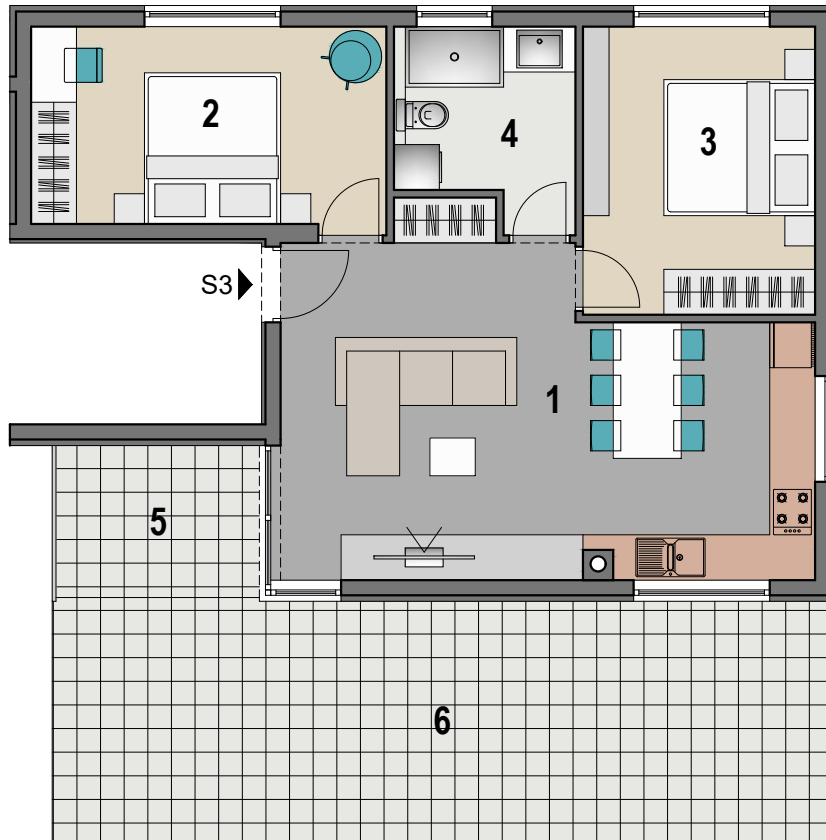


VIŠESTAMBENA ZGRADA U MANDRAMA, STAN S3



PRIZEMLJE M 1:100

| STAN S3 | | |
|---------|--------------------------|----------------------------|
| 1 | DNEVNI BORAVAK I KUHINJA | 28.80 m ² |
| 2 | SOBA 1 | 12.40 m ² |
| 3 | SOBA 2 | 11.70 m ² |
| 4 | KUPAONICA | 5.50 m ² |
| 5 | NATKRIVENA TERASA | 5.60 m ² |
| 6 | NENATKRIVENA TERASA | 33.20 m ² |
| | | 97.20 m² |