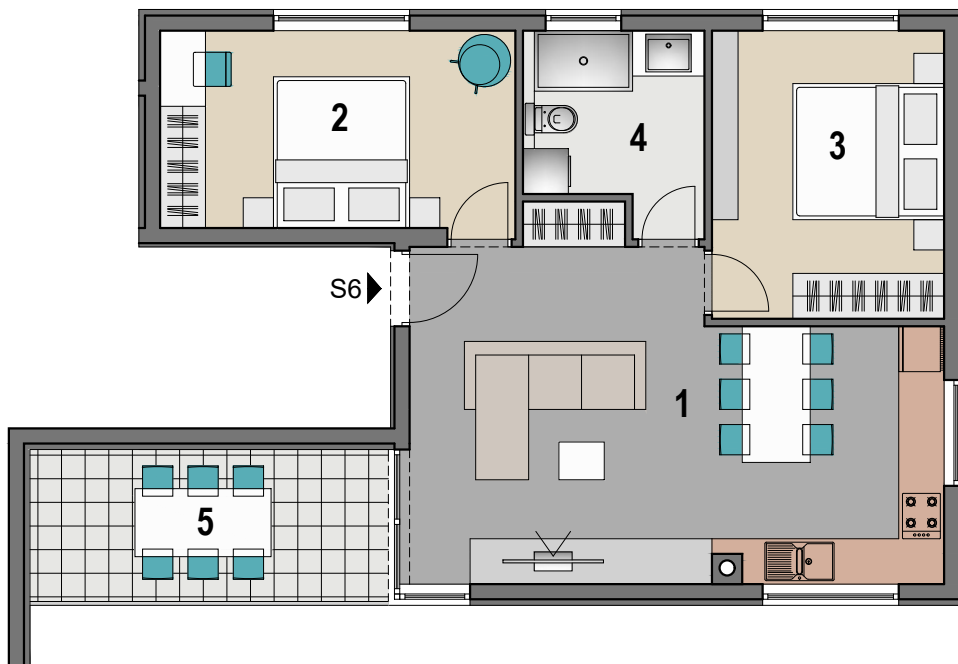


VIŠESTAMBENA ZGRADA U MANDRAMA, STAN S6



1. KAT M 1:100

STAN S6		
1	DNEVNI BORAVAK I KUHINJA	28.80 m ²
2	SOBA 1	12.40 m ²
3	SOBA 2	11.70 m ²
4	KUPAONICA	5.50 m ²
5	NATKRIVENA TERASA	9.70 m ²
		68.10 m²