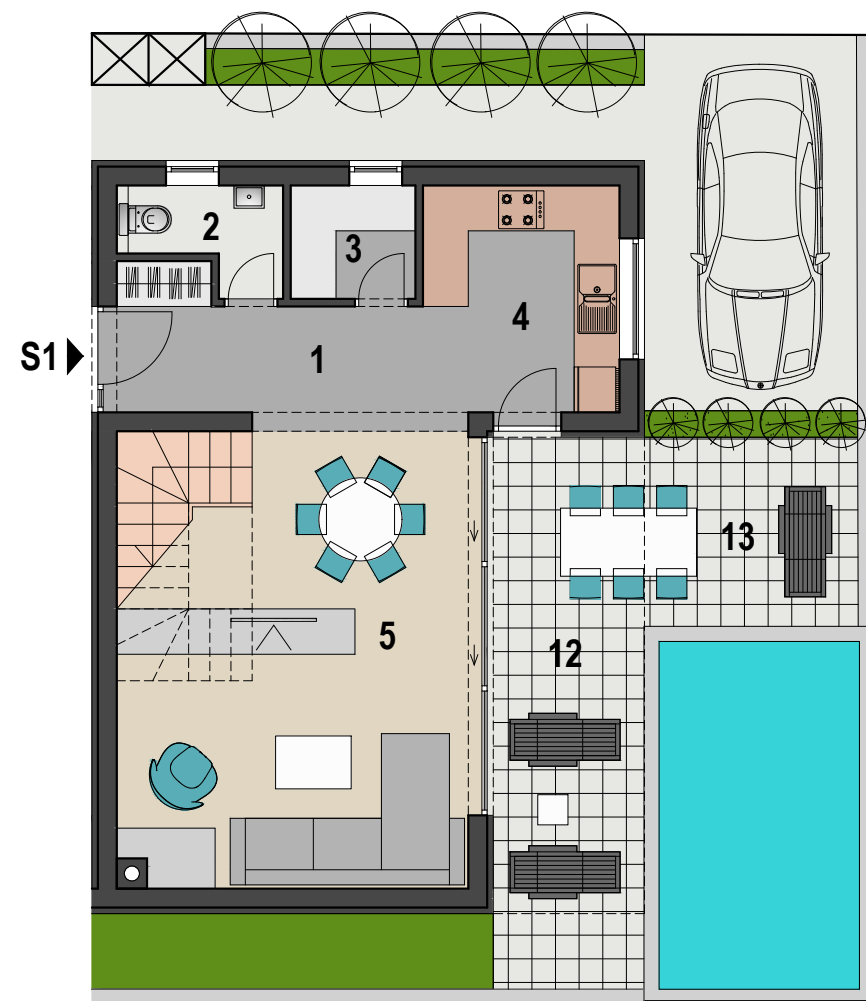
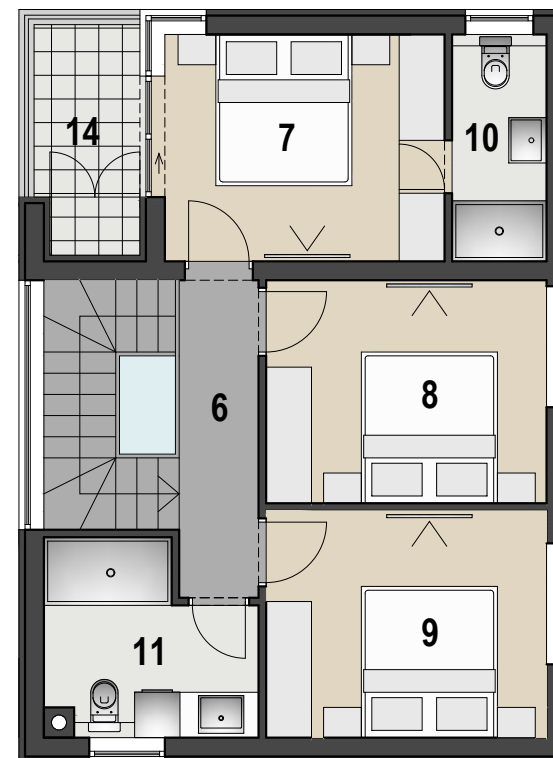


# VIŠESTAMBENA ZGRADA U MANDRAMA, STAN S1



PRIZEMLJE M 1:100



1. KAT M 1:100

STAN S1		
1	ULAZ	7.30 m <sup>2</sup>
2	WC	2.50 m <sup>2</sup>
3	IZBA	2.50 m <sup>2</sup>
4	KUHINJA	6.90 m <sup>2</sup>
5	DNEVNI BORAVAK	27.90 m <sup>2</sup>
6	HODNIK	4.40 m <sup>2</sup>
7	SOBA 1	11.10 m <sup>2</sup>
8	SOBA 2	10.90 m <sup>2</sup>
9	SOBA 3	11.10 m <sup>2</sup>
10	KUPAONICA 1	3.60 m <sup>2</sup>
11	KUPAONICA 2	6.20 m <sup>2</sup>
12	NATKRIVENA TERASA	12.60x0.50 = 6.30 m <sup>2</sup>
13	NENATKRIVENA TERASA	9.10x0.25 = 2.30 m <sup>2</sup>
14	LOGGIA	4.10x0.75 = 3.10 m <sup>2</sup>
		<b>106.10 m<sup>2</sup></b>