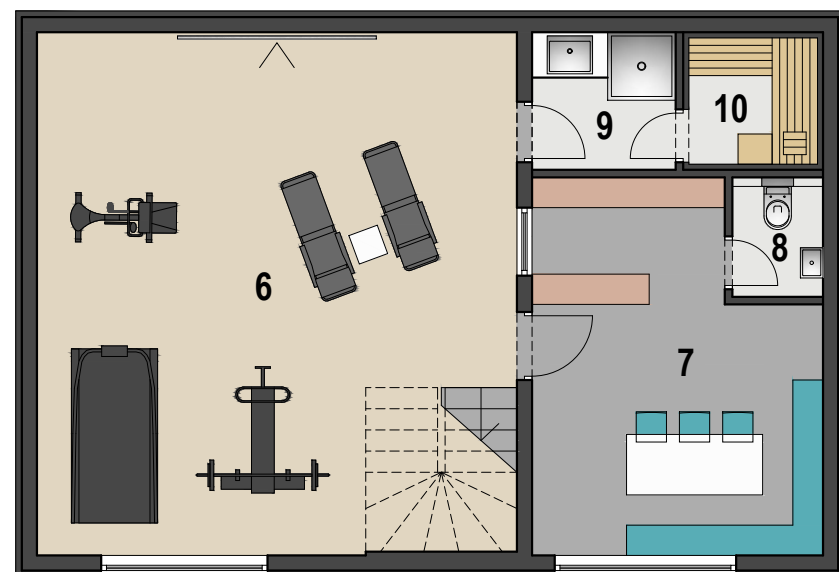
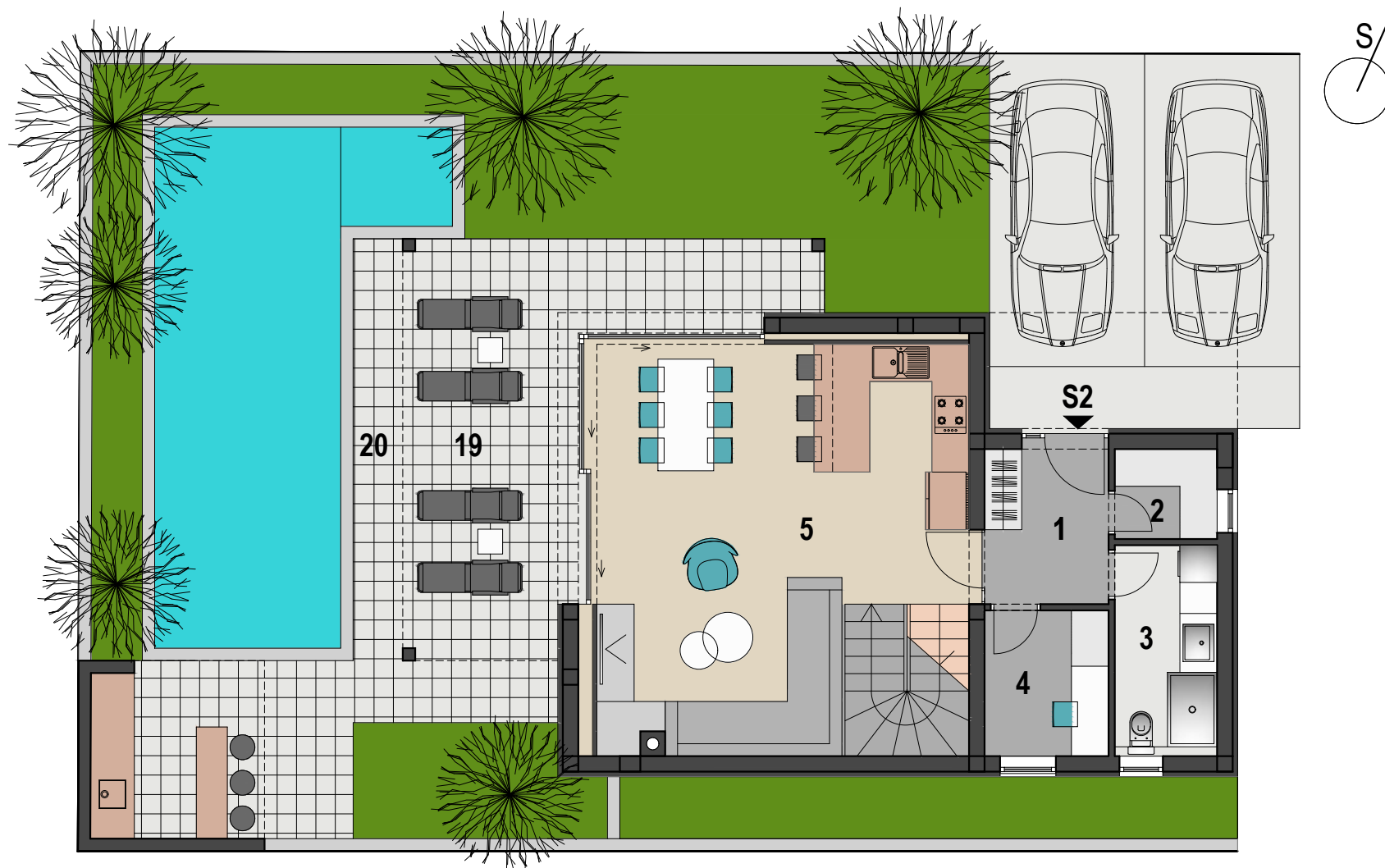


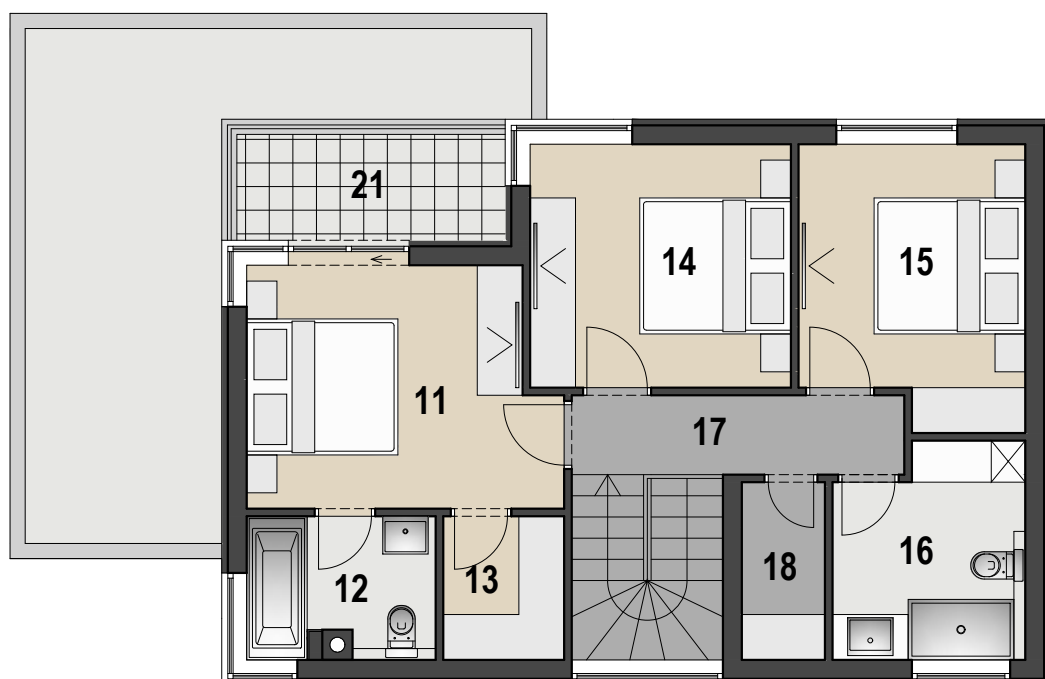
VIŠESTAMBENA ZGRADA U MANDRAMA, STAN S2



PODRUM M 1:100



PRIZEMLJE M 1:100



1.KAT M 1:100

STAN S2		
1	ULAZ	7.30 m ²
2	SPREMIŠTE 1	2.40 m ²
3	KUPAONICA 1	5.60 m ²
4	RADNA SOBA	4.70 m ²
5	DNEVNI BORAVAK I KUHINJA	40.80 m ²
6	FITNESS	43.60 m ²
7	KONOBA	17.00 m ²
8	WC	1.90 m ²
9	KUPAONICA 2	3.40 m ²
10	SAUNA	3.30 m ²
11	SOBA 1	12.60 m ²
12	KUPAONICA 3	4.50 m ²
13	GARDEROBA	3.00 m ²

STAN S2		
14	SOBA 2	11.10 m ²
15	SOBA 3	10.60 m ²
16	KUPAONICA 4	6.80 m ²
17	HODNIK	4.60 m ²
18	SPREMIŠTE 2	2.60 m ²
19	NATKRIVENA TERASA	25.00x0.50 = 12.50 m ²
20	NENATKRIVENA TERASA	8.70x0.25 = 2.20 m ²
21	LOGGIA	5.00x0.75 = 3.80 m ²
		204.30 m²