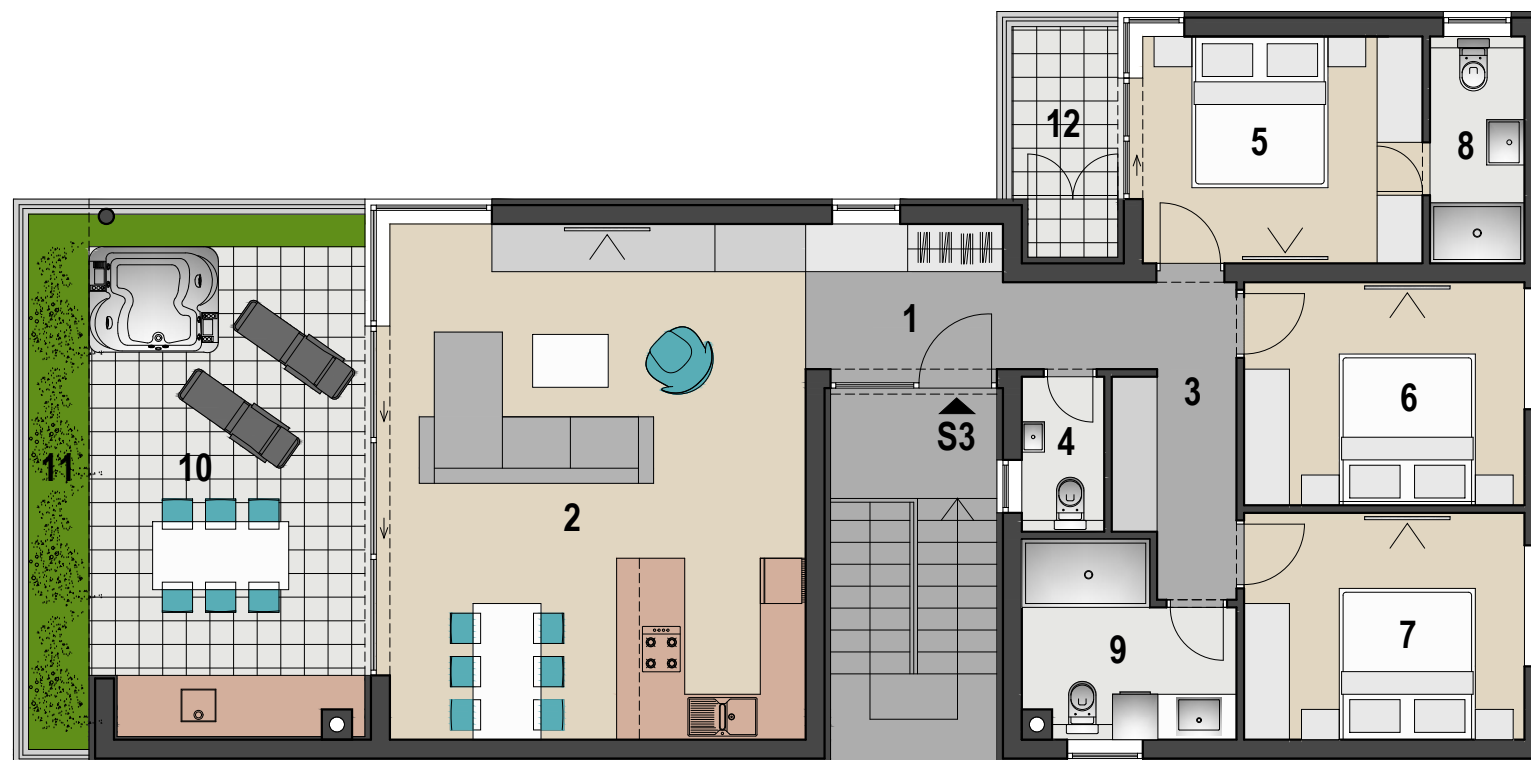


# VIŠESTAMBENA ZGRADA U MANDRAMA, STAN S3



2. KAT M 1:100

STAN S3		
1	ULAZ	5.00 m <sup>2</sup>
2	DNEVNI BORAVAK I KUHINJA	37.50 m <sup>2</sup>
3	HODNIK	8.00 m <sup>2</sup>
4	WC	2.10 m <sup>2</sup>
5	SOBA 1	11.10 m <sup>2</sup>
6	SOBA 2	10.90 m <sup>2</sup>
7	SOBA 3	11.10 m <sup>2</sup>
8	KUPAONICA 1	3.60 m <sup>2</sup>
9	KUPAONICA 2	6.20 m <sup>2</sup>
10	NATKRIVENA TERASA	24.80x0.50 = 12.40 m <sup>2</sup>
11	NENATKRIVENA TERASA	5.60x0.25 = 1.40 m <sup>2</sup>
12	LOGGIA	4.10x0.75 = 3.10 m <sup>2</sup>
		<b>112.40 m<sup>2</sup></b>